



Annual Report on UK local authority  
food law enforcement  
1 April 2012 to 31 March 2013  
**Data Summary - Wales**

---

FOOD  
HYGIENE  
RATING

UK REPORT AVAILABLE AT [HTTP://WWW.FOOD.GOV.UK/MULTIMEDIA/PDFS/BOARD/BOARD-PAPERS-2013/LAFOODLAW-ANNUAL-REPORT-1213.PDF](http://www.food.gov.uk/multimedia/pdfs/board/board-papers-2013/lafoodlaw-annual-report-1213.pdf)

## Table of content

1. ESTABLISHMENT PROFILES .....	3
Establishments Not Yet Rated .....	4
3. LOCAL AUTHORITY INTERVENTIONS .....	5
4. ENFORCEMENT ACTIONS .....	7
5. OFFICIAL FOOD SAMPLES .....	10
6. CONSUMER COMPLAINTS ABOUT FOOD AND FOOD ESTABLISHMENTS	11
7. FULL TIME EQUIVALENT (FTE) PROFESSIONAL LA STAFF .....	12
8. FOOD HYGIENE COMPLIANCE .....	13
9. AUDIT .....	14

## 1. ESTABLISHMENT PROFILES

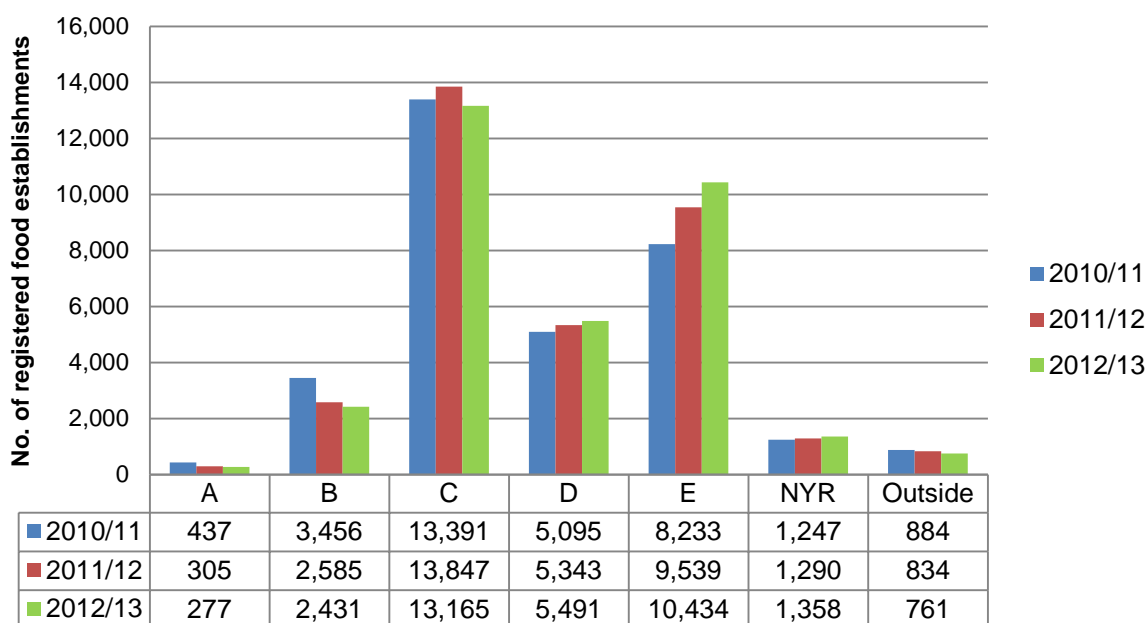
1.1. As at 31 March 2013, a total of 33,917 food establishments were registered with LAs in Wales, an increase of 0.5% on 2011/12 (33,743).

**Figure 1.1: 2012/13 registered food establishments profiles in Wales by food hygiene risk and premises type**

	Primary producers	Manufacturers and Packers	Importers/ Exporters	Distributors/ Transporters	Retailers	Restaurants and Caterers	Total
A	2	39	0	1	37	198	<b>277</b>
B	14	151	0	8	240	2,018	<b>2,431</b>
C	26	352	3	42	1,718	11,024	<b>13,165</b>
D	45	171	3	105	1,423	3,744	<b>5,491</b>
E	200	272	6	254	3,669	6,033	<b>10,434</b>
NYR	26	54	2	17	257	1,002	<b>1,358</b>
Outside	62	27	0	8	341	323	<b>761</b>
<b>Total</b>	<b>375</b>	<b>1,066</b>	<b>14</b>	<b>435</b>	<b>7,685</b>	<b>24,342</b>	<b>33,917</b>

1.2. A comparison of the split of risk ratings in food establishments indicates a reduction of 5.2% in premises rated A to C (from 16,737 in 2011/12 to 15,873 in 2012/13) and an increase of 7% in premises rated D and E (from 14,882 in 2011/12 to 15,925 in 2012/13).

**Figure 1.2: Comparison of food establishments profile by food hygiene risk rating - Wales**



## 2. Establishments Not Yet Rated<sup>1</sup>

2.1. In Wales, 4.0% of registered food establishments were not yet rated (NYR) for food hygiene risk as at 31 March 2013 (1,358 out of 33,917). This is a slight increase on the 2011/12 figure of 3.8% (1,290 out of 33,743).

<b>Figure 2.1: Comparison of percentage of Wales / UK LAs, by level of registered establishments NYR for food hygiene</b>						
	<b>0 - 4.99%</b>	<b>5 - 9.99%</b>	<b>10 - 14.99%</b>	<b>15 - 19.99%</b>	<b>20 - 24.99%</b>	<b>25%+</b>
<b>Wales</b>	63.6%	27.3%	9.1%	0.0%	0.0%	0.0%
<b>Total UK</b>	<b>57.9%</b>	<b>31.1%</b>	<b>6.3%</b>	<b>4.0%</b>	<b>0.5%</b>	<b>0.2%</b>

<b>Figure 2.2: Comparison of percentage of registered establishments NYR for food hygiene from 2010/11</b>			
<b>Wales</b>	<b>2010/11</b>	<b>2011/12</b>	<b>2012/13</b>
Total number of establishments	32,743	33,743	33,917
Number of NYR establishments	1,247	1,290	1,358
Percentage NYR	3.8%	3.8%	4.0%

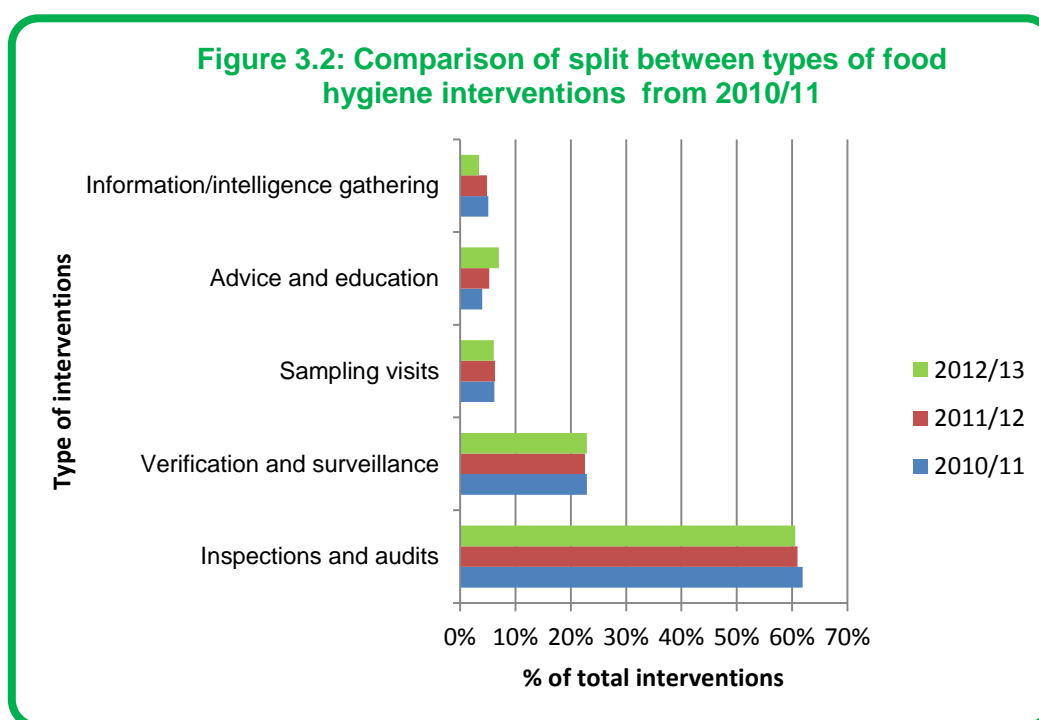
<sup>1</sup> Not yet rated (NYR) – those establishments yet to be assessed for a risk rating i.e. not inspected by LA.

### 3. LOCAL AUTHORITY INTERVENTIONS

3.1. During 2012/13, 28,822 **food hygiene interventions** were carried out in Wales, a 4.2% decrease on the reported number in 2011/12 (30,139).

Figure 3.1: Food hygiene interventions carried out in Wales 2012/13							
	Inspections and audits	Verification and surveillance	Sampling visits	Advice and education	Information/intelligence gathering	Total	
<b>Wales</b>	<b>17,462</b>	<b>6,607</b>	<b>1,741</b>	<b>2,024</b>	<b>988</b>	<b>28,822</b>	
UK	269,962	80,911	18,737	25,129	20,560	415,299	
Intervention types as a % of total food hygiene interventions							
<b>Wales</b>	<b>60.6%</b>	<b>22.9%</b>	<b>6.0%</b>	<b>7.0%</b>	<b>3.4%</b>	<b>100.0%</b>	
UK	65.0%	19.5%	4.5%	6.1%	5.0%	100.0%	
Percentage of food hygiene due interventions achieved							
	A	B	C	D	E	NYR	Total
<b>Wales</b>	99.8%	99.8%	99.6%	66.1%	51.9%	86.0%	88.8%
UK	98.9%	98.5%	89.7%	70.6%	55.5%	88.4%	83.7%

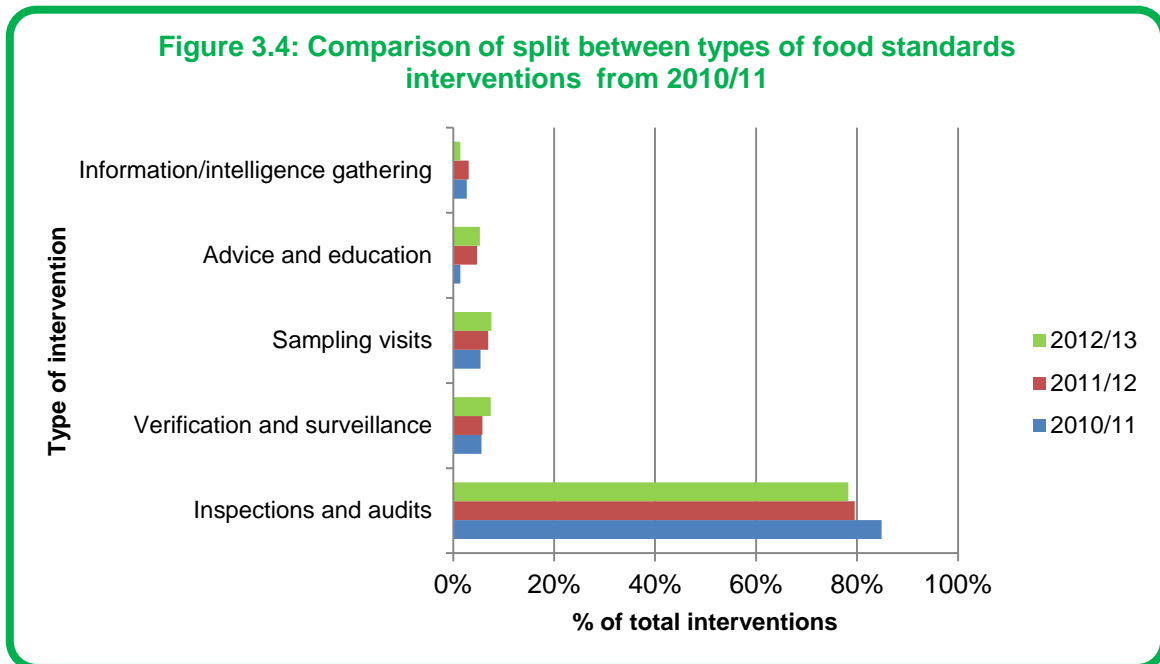
3.2. Inspections and audits remain the most frequent food hygiene intervention type (60.6%, compared with 61.0% in 2011/12). The levels of verification and surveillance visits and sampling visits were similar to those reported in previous years. However, there was an increase in food hygiene advice and education interventions to 7.0% (from 5.2% in 2011/12) and a decrease in information/intelligence gathering activity to 3.4% (from 4.9 in 2011/12).



3.3. During 2012/13, 8,940 **food standards interventions** were carried out in Wales, a 14.8% decrease on the reported number in 2011/12 (10,495).

<b>Figure 3.3: Food standards interventions carried out in Wales 2012/13</b>						
	<b>Inspections and audits</b>	<b>Verification and surveillance</b>	<b>Sampling visits</b>	<b>Advice and education</b>	<b>Information/intelligence gathering</b>	<b>Total</b>
<b>Wales</b>	<b>6,999</b>	<b>667</b>	<b>675</b>	<b>472</b>	<b>127</b>	<b>8,940</b>
<b>UK</b>	79,725	10,363	8,289	6,056	5,856	110,289
<b>Intervention types as a % of total food standards interventions</b>						
<b>Wales</b>	<b>78.3%</b>	<b>7.5%</b>	<b>7.6%</b>	<b>5.3%</b>	<b>1.4%</b>	<b>100.0%</b>
<b>UK</b>	72.3%	9.4%	7.5%	5.5%	5.3%	100.0%
<b>Percentage of food standards due interventions achieved</b>						
	<b>A</b>	<b>B</b>	<b>C</b>	<b>NYR</b>	<b>Total</b>	
<b>Wales</b>	<b>97.7%</b>	<b>64.4%</b>	<b>42.4%</b>	<b>73.5%</b>	<b>58.9%</b>	
<b>UK</b>	88.6%	51.8%	39.8%	62.6%	49.5%	

3.4. Despite a decrease by 16.0% in comparison with 2011/12 data, food standards inspections and audits, as in previous years, were the most prevalent intervention type carried out in 2012/13.



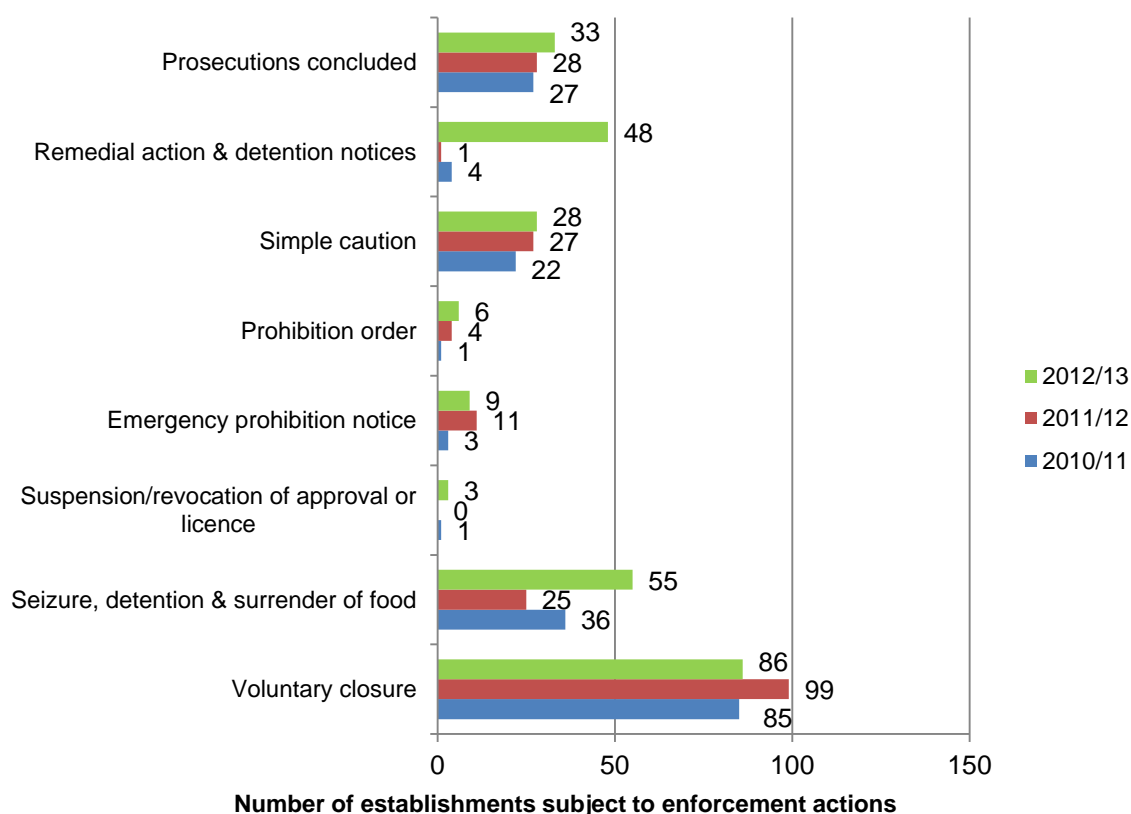
## 4. ENFORCEMENT ACTIONS

4.1. In 2012/13, 13,358 **food hygiene enforcement actions** were reported in Wales, 12,670 written warnings and 688 other 'official' enforcement actions. This is a decrease of 4.3% on 2011/12 (13,961), although some types of enforcement action have shown increases (see Figure 4.2).

**Figure 4.1: Number of establishments subject to food hygiene enforcement actions in Wales 2012/13**

	Voluntary closure	Seizure, detention & surrender of food	Suspension / revocation of approval or licence	Emergency Prohibition Notice	Prohibition Order	Simple caution	Improvement notice	Remedial action and detention notices <sup>2</sup>	Written warnings	Prosecutions concluded	Totals
<b>Wales</b>	<b>86</b>	<b>55</b>	<b>3</b>	<b>9</b>	<b>6</b>	<b>28</b>	<b>420</b>	<b>48</b>	<b>12,670</b>	<b>33</b>	<b>13,358</b>
UK Totals	1,024	407	22	318	125	276	5,274	213	161,327	320	169,306

**Figure 4.2: Comparison of food hygiene enforcement actions from 2010/11**

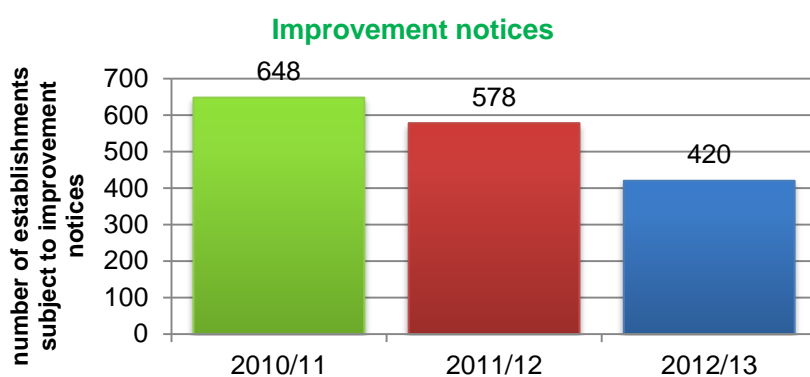


<sup>2</sup> From 1 May 2012 enforcement officers in Wales have been able to use Remedial Action Notices to secure compliance at all food establishments. They were previously only available for use in approved premises.

**Figure 4.2 (cont.)**



Note: to achieve adequate resolution, the scale does not begin at zero.



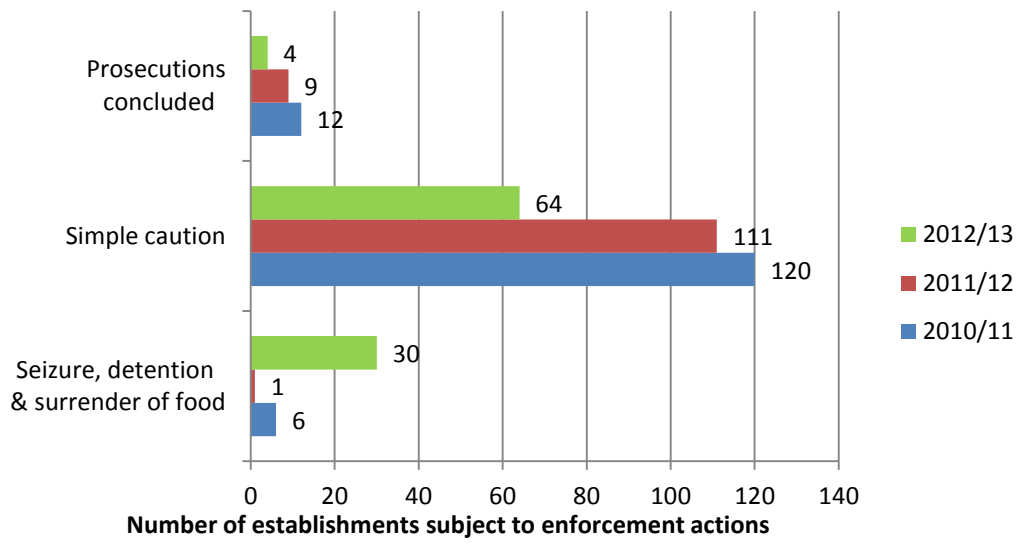
4.2. In total 950 **food standards enforcement actions** were reported in Wales in 2012/13, 852 written warnings and 98 other 'official' enforcement actions. This is a decrease of 2.7% on 2011/12 (976).

**Figure 4.3: Number of establishments subject to food standards enforcement actions in Wales 2012/13**

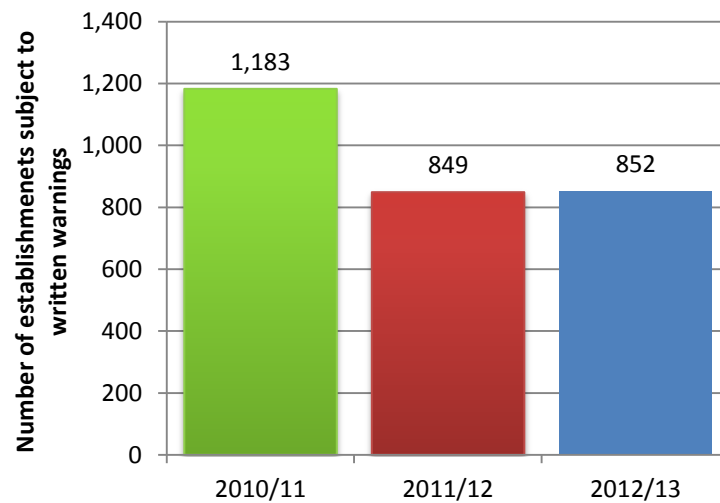
	Seizure, detention & surrender of food	Simple caution	Written warnings	Prosecutions concluded	Totals
<b>Wales</b>	<b>30</b>	<b>64</b>	<b>852</b>	<b>4</b>	<b>950</b>
<b>UK totals</b>	136	143	13,903	78	14,260



**Figure 4.4: Comparison of food standards enforcement actions from 2010/11**



**Written warnings**



## 5. OFFICIAL FOOD SAMPLES

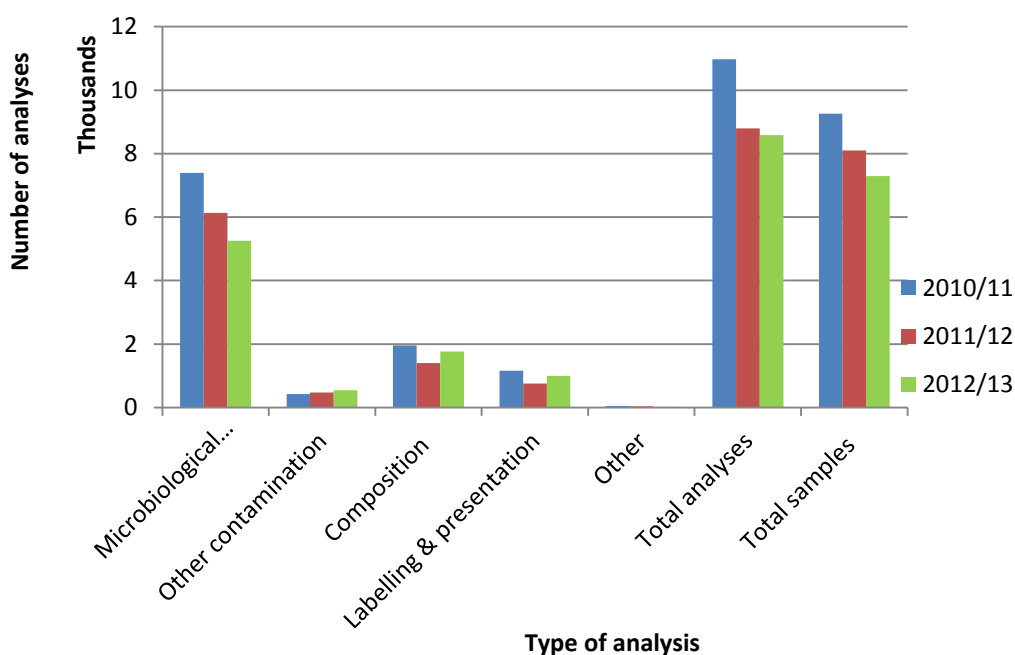
5.1. A total of 7,294 official food samples were taken in Wales in 2012/13, a decrease of 9.9% from 2011/12. This is slightly higher than the UK wide reduction of 6.8%. However, the number of analyses decreased by only 2.4% (UK wide 6.3%).

5.2. Microbiological food sampling is coordinated through the Welsh Food Microbiological Forum. The WFMF is a collaboration of public health organisations and local authorities in Wales. The aim is to improve the microbiological quality of food available to Welsh consumers. This is achieved by using the innovative "shopping basket" protocol with a nominated list of foods of interest and by completing targeted surveys that address current food related issues.

**Figure 5.1: Official Samples in Wales from 2010/11**

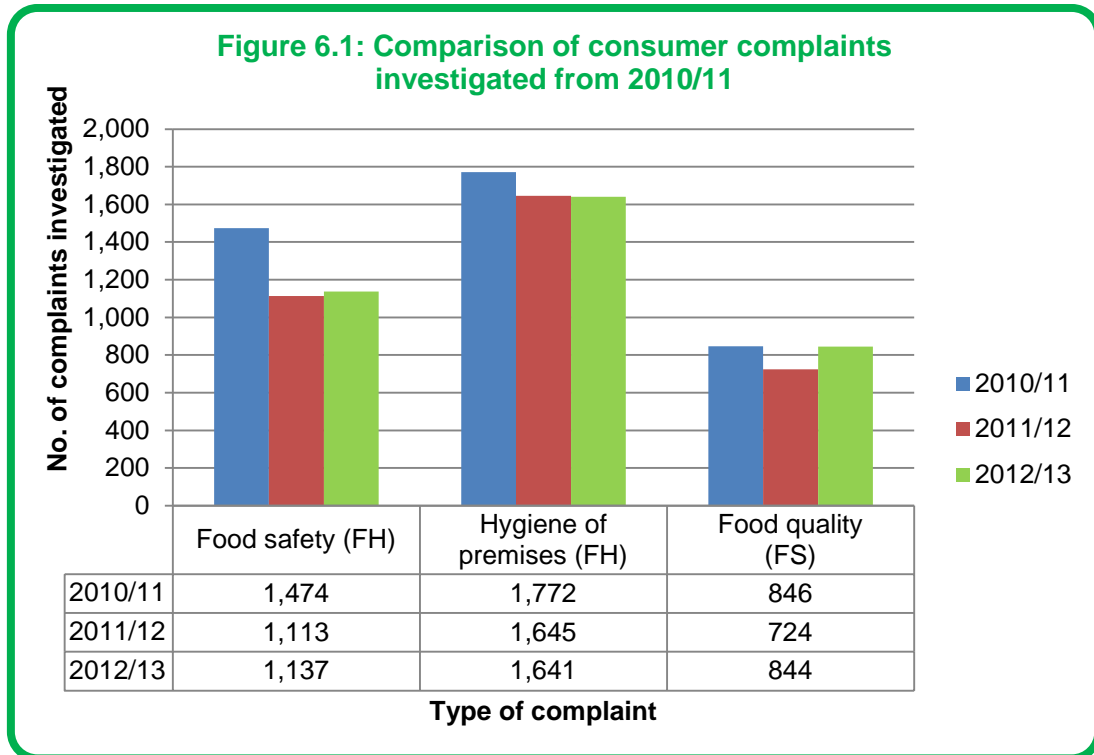
Wales	2010/11	2011/12	2012/13
Microbiological contamination	7,395	6,135	5,258
Other contamination	418	470	546
Composition	1,950	1,401	1,761
Labelling & presentation	1,158	755	999
Other	52	38	21
<b>Total analyses</b>	<b>10,973</b>	<b>8,799</b>	<b>8,585</b>
<b>Total samples</b>	<b>9,260</b>	<b>8,096</b>	<b>7,294</b>

**Figure 5.2: Comparison of official sampling from 2010/11**



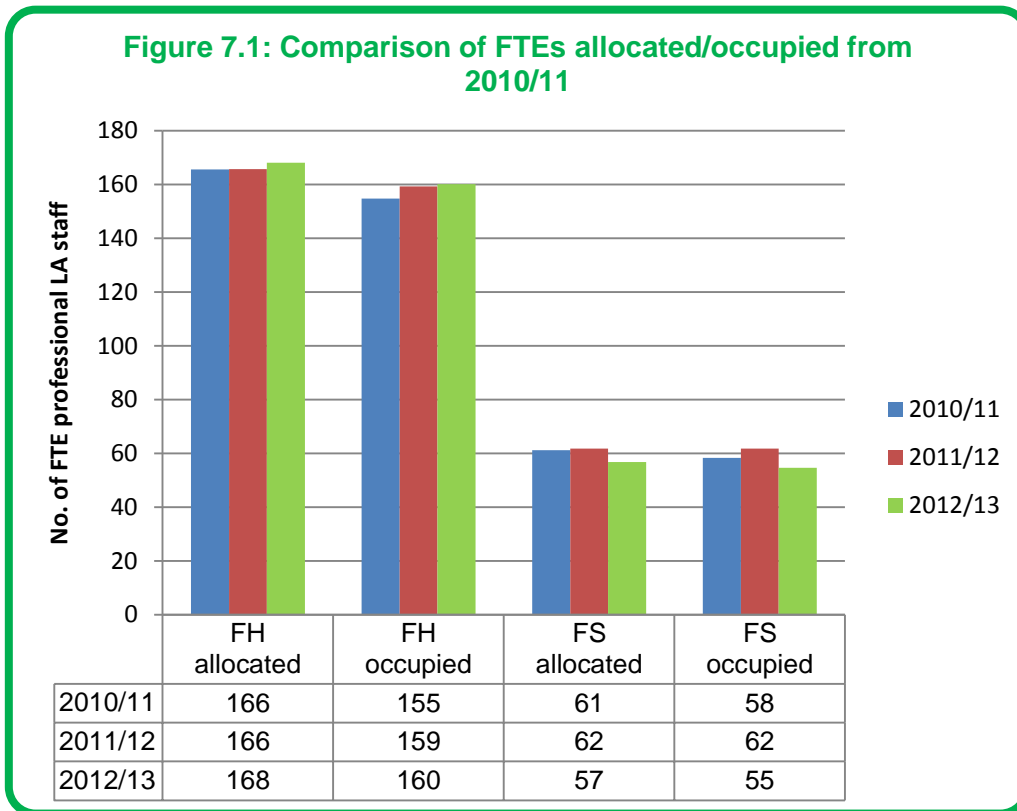
## 6. CONSUMER COMPLAINTS ABOUT FOOD AND FOOD ESTABLISHMENTS

6.1. Welsh LAs dealt with a total of 3,622 consumer complaints about food and food establishments during 2012/13, an increase of 4% (from 3,482) on 2011/12. Although the level of complaints in relation to food safety and hygiene of premises remained fairly static, the number of complaints about food quality increased by 16.6% on 2011/12 data.



## 7. FULL TIME EQUIVALENT (FTE) PROFESSIONAL LA STAFF

7.1. A total of 215 FTE professional LA staff was reported as being in post at 31 March 2013. This represents a 3% decrease on 2011/12 figures (221).





## 9. AUDIT

- 9.1. In Wales, full audits of all 22 LA food hygiene, standards and feed services are being carried out as part of a 3-year rolling programme. This programme commenced in February 2013 and will run until 2016. A programme of focused audits is also carried out which is agreed annually.
- 9.2. Two full audits were carried out in this reporting period and the findings of these are being used to pilot a local authority audit rating scheme. Feed was not included within the scope of these audits as the local authorities involved were progressing plans to deliver their feed enforcement services on a regional basis.
- 9.3. Auditors followed up a number of focused audits which had taken place in previous years including four audits of Official Controls on Feed of Non-Animal Origin and Feed Establishments, including Primary Producers. On-site assessments at three local authorities found that slow progress was being made in progressing action plans. The fourth Authority had made no progress in delivering their action plan. Follow up with a senior manager of the Authority was planned to take place early in 2013/14.
- 9.4. Following completion of action plans, two local authority focused audits were closed during the year. Auditors will continue to monitor action plans in respect of a further three focused audits which are still to be completed.

Programmed audits and assessments planned	2
Programmed audits carried out	2
Desktop assessments carried out	0
% of planned audit and assessment programme completed	100%
Reality checks	5 as part of LA audits
Other LA assessments /follow-up audits carried out	7
Number of audits closed during reporting period (NB: includes those for audits carried out prior to the reporting period)	2